

Battery Socket

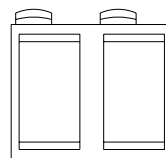
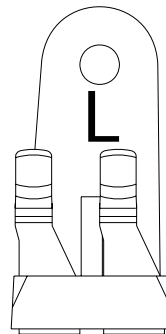
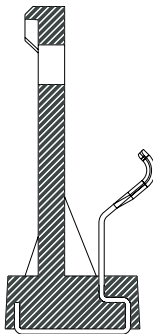


SPECIFICATIONS

- A) MATERIAL: BeCU C17200 ALLOY 25 1/2 HARD
THICKNESS: 0.2 mm
- B) FINISH:
UNDER LAYER: SULFOMATE NICKEL PER QC-N-290-A
THICKNESS = 0.00005" MINIMUM
EXTERIOR LAYER: HARD GOLD PER MIL-G-45204, TYPE 2
THICKNESS = 0.00003" MINIMUM
- C) BREAK ALL EXTERNAL EDGES
- D) PART FLATNESS \square 0.10
- E) GENERAL TOLERANCE \triangle 0.10 A B C

CLOCK BLOCK

- A) MATERIAL: PC/ABS, SABIC CYCOLOY C2800 OR POLYCOM APPROVED EQUIVALENT
- B) COLOR: DARK GRAY (REFER TO COLOR CHIP GY3E117)
- C) FINISH:SPI D-2 OR BETTER. NO EJECTOR PIN OR INSERT ON SPECIFIED SURFACES
- D) DRAFT AND RADII: PER PROE DATABASE
- E) PART FLATNESS \square 0.10
- F) GENERAL TOLERANCE \triangle 0.10 A B C



P 3 2 0 0 - 0 2 L 0 0 X - 3 0 X

Insulator material
P: PC/ABS

Number of
Contact

Appearance of
pin header
L00: Left angle
R00: Right angle

Color

Plating material
G Gold Plated
T Tin Plated
H Duplex Plated

Plating thickness
01 Normal
04 4u"
30 30u"